



The SimplySnap Lighting solution addresses the needs of commercial and industrial environments that require performance, reliability, range, scale, and flexible control options.

Our software is designed with core capabilities that help simplify managing indoor and outdoor lighting systems of all sizes. It also includes key features to help meet the wide variety of energy codes and regulations that exist in different areas. SimplySnap has a local browser interface built into each site controller or a cloud based user interface for remote access and cloud based applications available to expand the lighting system with other options and capabilities.

SIMPLE USER INTERFACE

With SimplySnap, users can access and control their lighting system using a web browser on any computer or smart device.

The responsive design and intuitive user interface works great on laptops, tablets, or phones for quick access and real time updates to the system. Our intelligent lighting system scales easily to support small sites with a few hundred lights, installations with thousands of locations, and larger sites with up to 10,000 lights.



KEY APPLICATIONS

OUTDOOR APPLICATIONS



- + Parking Lots
- + Parking Garages
- + Pathways
- + Sports Facilities & Stadiums
- + College & Enterprise Campus

INDOOR APPLICATIONS

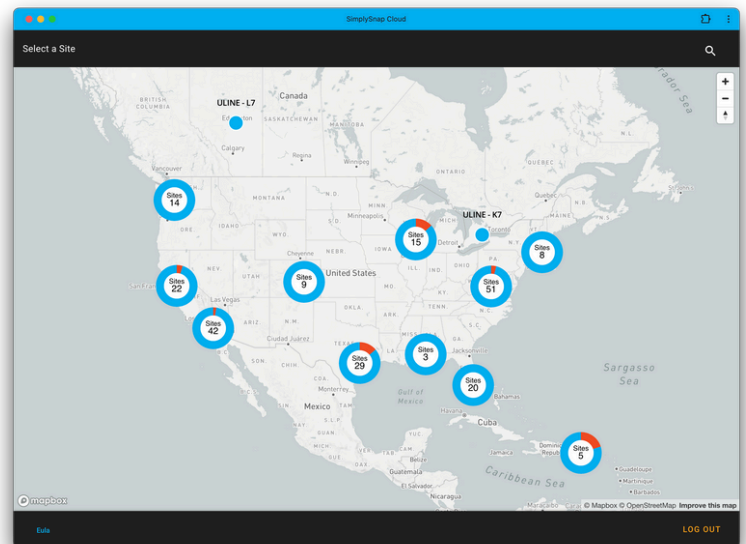


- + Light industrial and warehouses
- + Manufacturing facilities
- + Production Lines
- + Gymnasiums
- + Indoor Practice Fields

SOFTWARE FEATURES

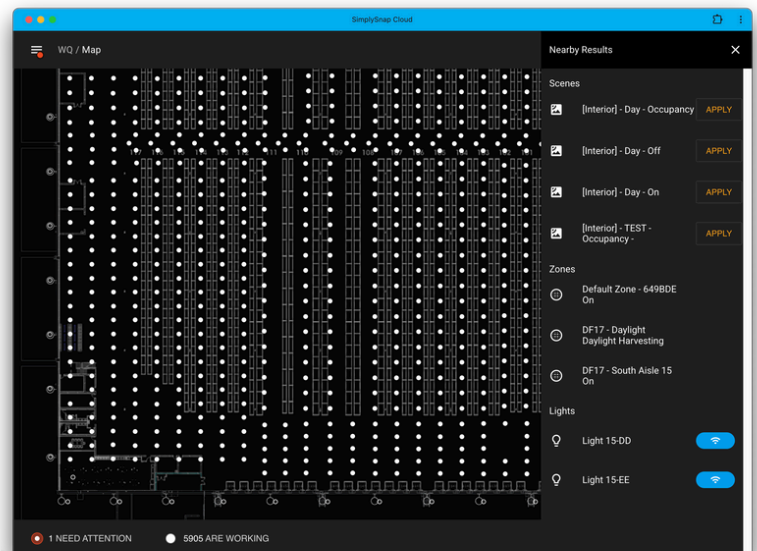
MULTI-SITE MANAGEMENT

Managing multiple locations usually means having a list of website links and a collection of passwords. With SimplySnap, use a single log-in and one interface to manage multiple sites.



ZONES

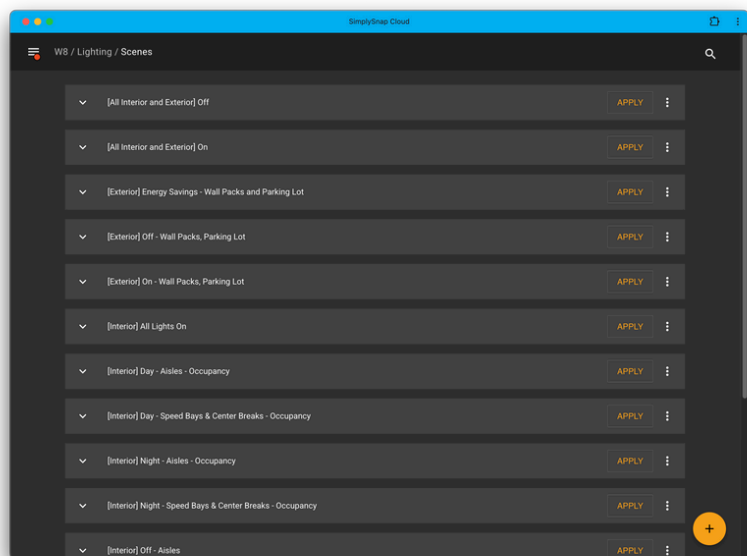
Create groups of lights based on location, function, or type of fixture. This lets you make adjustments to entire areas or Zones with just a few clicks.



SOFTWARE FEATURES

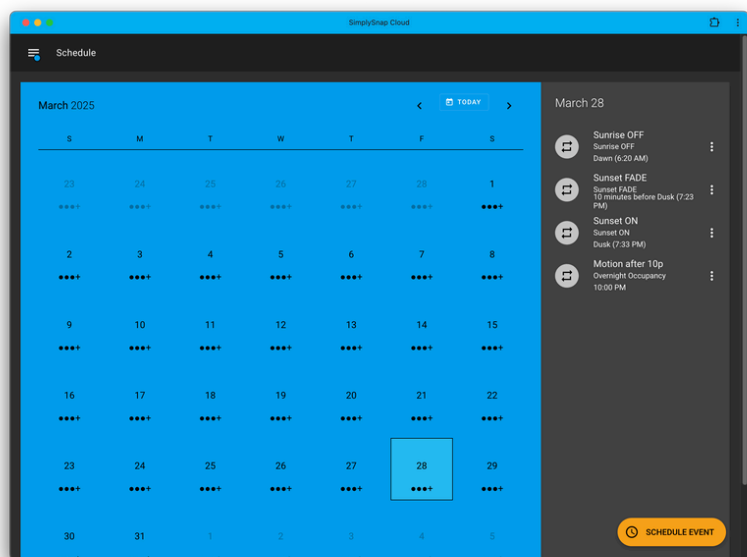
SCENES

Create a behavior or a group of behaviors for one or more control zones. Once created these scenes can be manually applied with a single click or set to a schedule.



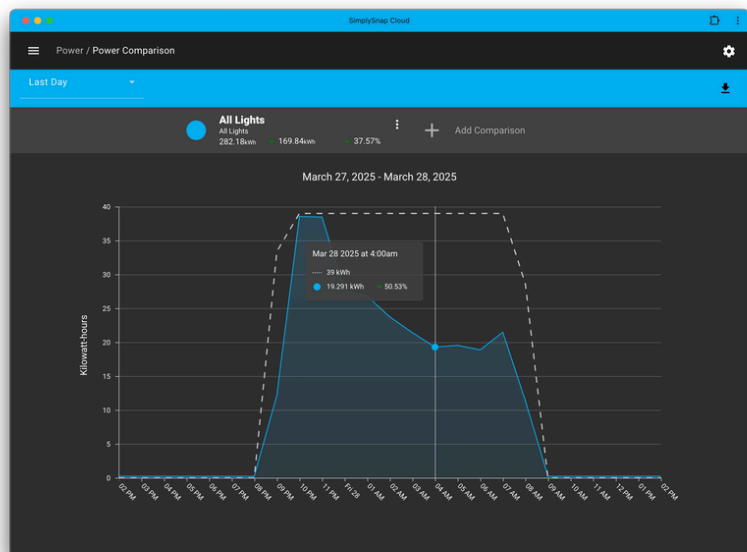
SCHEDULES

The built in calendar feature allows scenes to be scheduled out for several years. Pick a scene and a start date to add some easy automation to your lighting control system.



ENERGY MONITORING

Gather data to understand the impact of different control strategies, schedules, and sensors. Compare energy usage across multiple zones and over a specific timeframe.



OTHER SOFTWARE FEATURES

- + Individual or Zone Control: On/Off/Continuous Dimming
- + Sensor Support: Use Occupancy and Photocell sensors to manage behaviors across groups of lights
- + Daylight Harvesting: Open-loop Daylight Harvesting for large interior spaces with natural light
- + Demand Response: Multiple options to participate in utility rebate programs
- + High-end Trim: Reduce energy use by adjusting the maximum light levels across the system
- + Task Tuning: Granular control to adjust light levels in specific areas for specific tasks
- + Alerts and Alarms: e-mail notifications when issues are detected
- + External System Integration: Leverage the lighting controls with existing Building Management Systems over BACnet or Modbus. Lutron Athena integration also available.

HARDWARE COMPONENTS

Gateways



The SS450 & CBS Gateway coordinate communication out to all the Synapse-enabled devices that are part of the mesh network. They manage system configuration details, gather power and status information, apply zone behaviors, store scheduled events, generate notifications, and update controllers when new features or enhancements are added.

SimplySnap Cloud synchronizes the configuration & status across one or more Gateways. For a complete description of SimplySnap Cloud Services, see our [Cloud Service Brief](#).



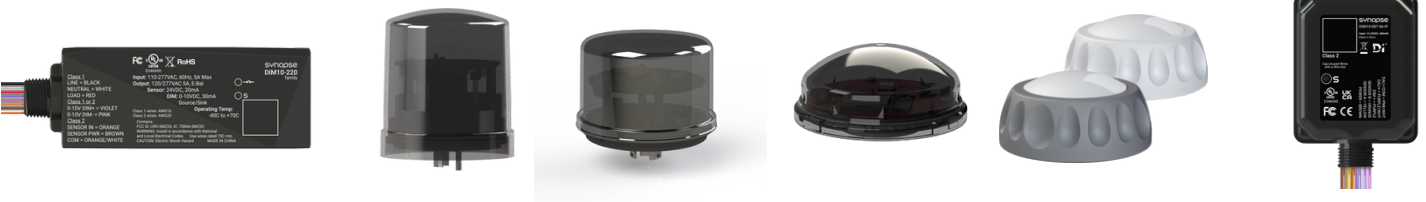
DIM10-087-06-A, DIM10-087-06-FW, DIM10-087-06-F3W, EMB-S2-A

In Fixture Controllers



WSW-02-IP, WSW-08, BMS-GW-002, WSN-DPM

Accessories



DIM10-220, TL7-HVG, TL7-DALI, ZHA-S1, CSEN1-H-W/G, DIM10-087-06-IP

External Controllers