



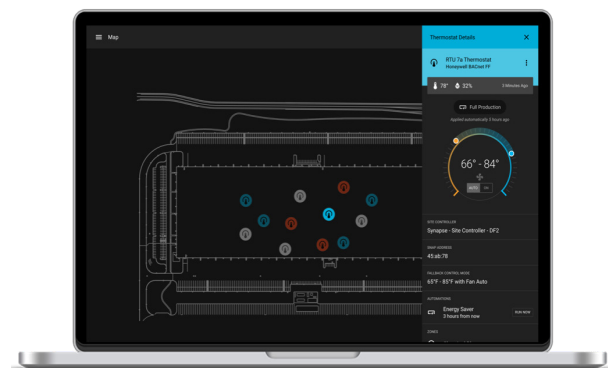
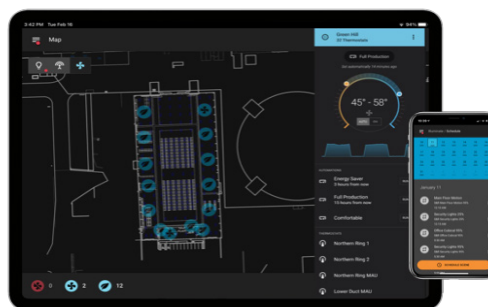
Easily manage HVAC equipment across a facility with wireless controls from Synapse to centralize control, save time, and reduce energy waste.

Synapse provides an HVAC Management solution within the suite of energy management applications built into SimplySnap. The HVAC Management solution provides a way to retrofit existing HVAC equipment with a modern monitoring and control architecture. With SimplySnap's configurable software and standards-based hardware interface devices, the facility manager can take control of disparate, legacy HVAC equipment and provide additional intelligence to improve the operations and energy efficiency of their facility.

SIMPLE USER INTERFACE

With SimplySnap, users can access and control existing HVAC systems from anywhere using a web browser on any computer or smart device.

The responsive design and intuitive user interface works great on laptops, tablets, or mobile phones for quick access and real-time updates to the system. Remotely configure or make adjustments to temperature set points and fan modes on thermostats spread across the facility.



KEY APPLICATIONS

MANUFACTURING FACILITIES



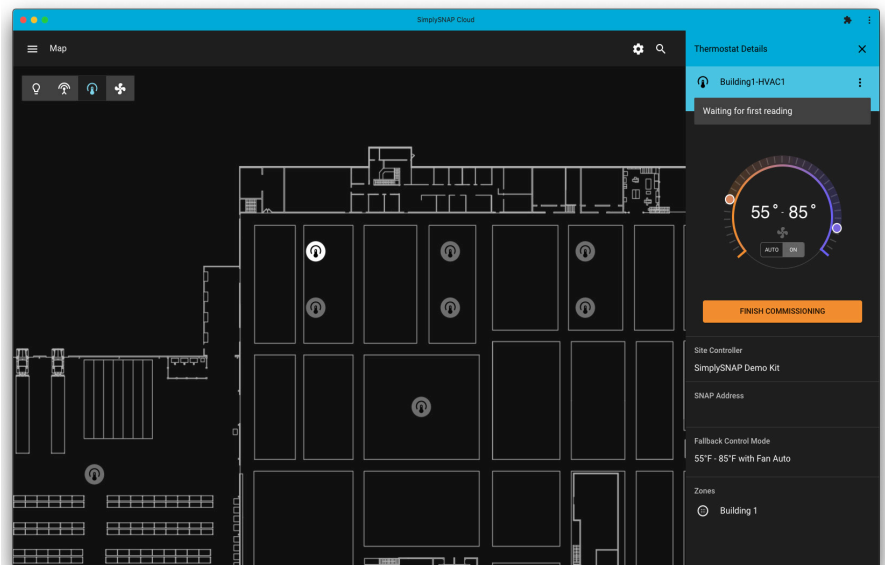
- + Automotive
- + Fabricated Metal
- + Foundries

- + Heavy Equipment
- + Light Industrial
- + Processing Plants

SOFTWARE FEATURES

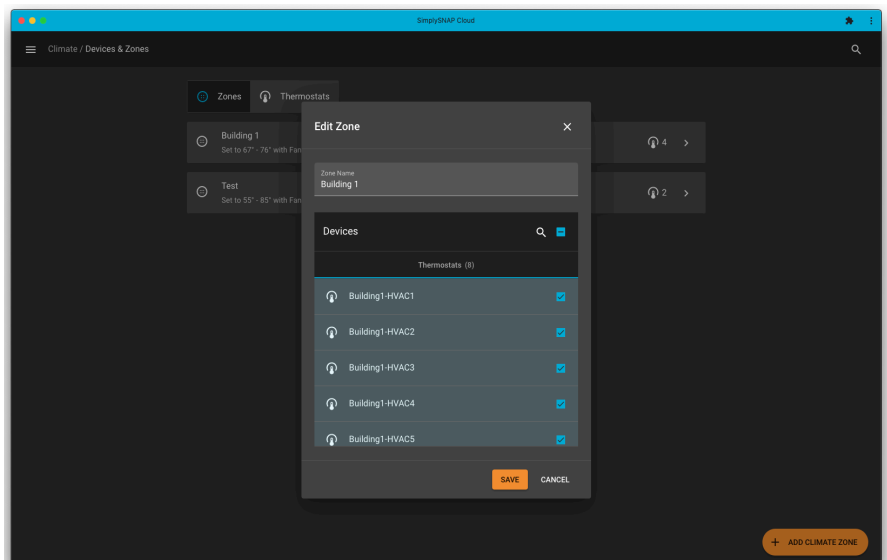
INTUITIVE USER INTERFACE

The map based interface of SimplySnap provides fast and easy access to your HVAC systems from anywhere. Adjust setpoints or fan modes all from a user interface that was designed to be easy to learn and easy to use.



CLIMATE ZONES

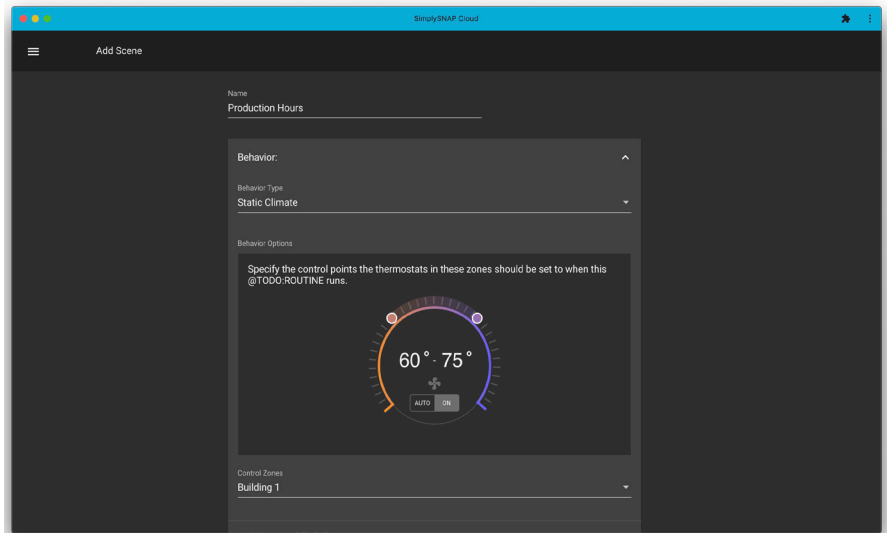
Thermostats can be organized together into Climate Zones and managed as a group. All the systems that are in a Climate Zone will share the same setpoints and fan modes so they are all working together toward the same goals.



SOFTWARE FEATURES

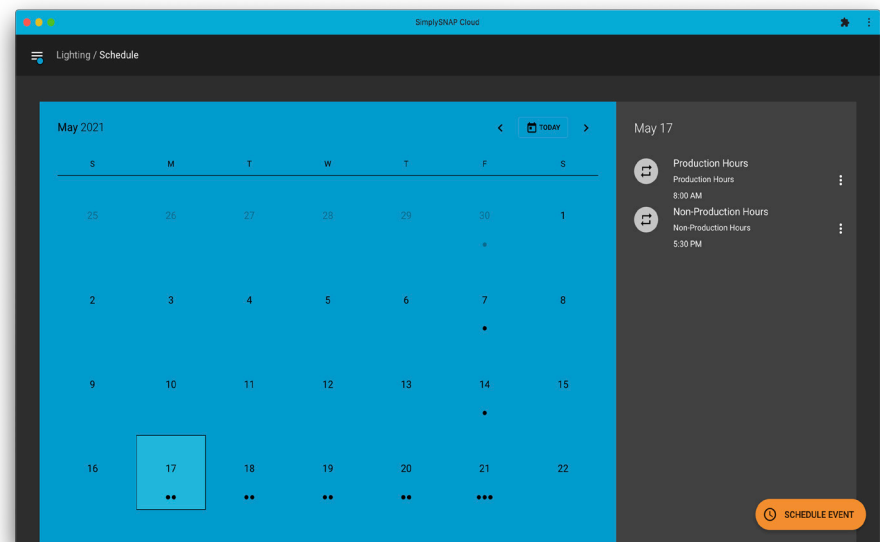
ROUTINES

Create a behavior or a group of behaviors for one or more climate zones. Once created these routines can be manually applied with a single click or set to a schedule.



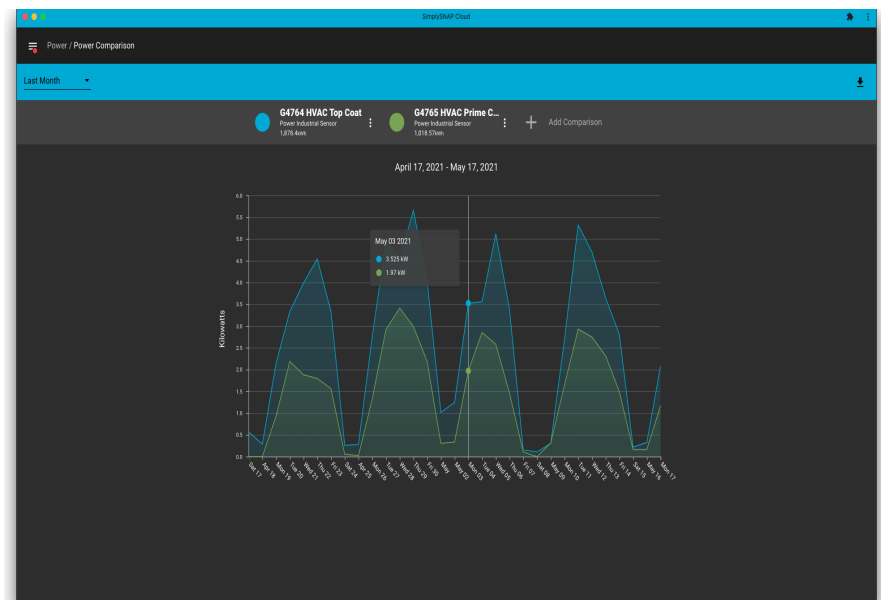
SCHEDULES

The built in calendar feature allows routines to be scheduled for one time events or for reoccurring events out for several years. Create schedules for production and non-production hours to automate HVAC setpoints and save energy.



ENERGY REPORTING

Understand energy use across individual HVAC units or Climate Zones made up of multiple HVAC units using the Sense 4-20 Industrial Sensor hardware and the optional Energy Insights software solution.



OTHER SOFTWARE FEATURES

- + Mult-site management: Single log-in and one interface to manage multiple locations.
- + Thermostat Control: Remotely configure or adjust set points and fan mode on thermostats spread across the facility
- + User Account Levels: Different user account levels restrict access and control to the system to provide basic users with only the tools they need
- + Alerts and alarms: notifications are sent immediately when issues are detected
- + Automation: Build schedules for different areas based on production hours or other factors to adjust HVAC behaviors automatically
- + Expansion: Use with other Synapse-enabled devices to add control of lighting systems, compressed air, or energy monitoring
- + Standardized control: Allows users to manage both old and new HVAC systems from a mixture of vendors
- + Lock out: Remove local thermostat controls to prevent adjustments from unauthorized personnel

HARDWARE COMPONENTS



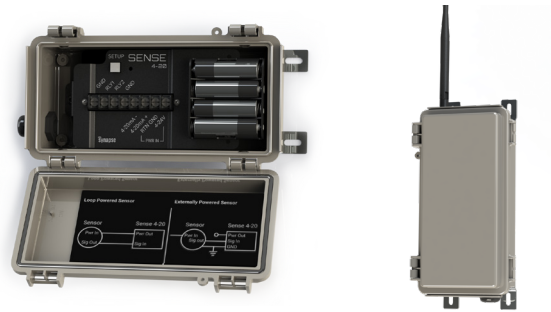
CBSSW-450-002
Site Controller

The CBS Site Controllers are key components of every SimplySnap solution from Synapse. Site Controllers coordinate communication out to all the Synapse-enabled devices that are part of the mesh network. They manage system configuration details, gather power and status information, apply zone behaviors, store scheduled events, generate notifications, and update Synapse hardware when new features or enhancements are added.



CONTROL-485-101
Control Thermostat

The Control Thermostat connects to a thermostat to provide centralized control of setpoints and fan modes of a HVAC system.



WSI-4-20-101 and IIOT-REPEATER
Wireless Sensor Interface and IIoT Repeater

The Sense 4-20 and IIoT Repeater are optional hardware devices that can be used to enhance the HVAC solution by adding energy monitoring and additional connections to extend the mesh network across longer distances or around obstructions.

CLOUD BASED LIGHTING SOFTWARE AND OPTIONS

Part #	Description
SW-HVAC-BASE	12 month subscription. Schedule & triggered control of HVAC
Optional Cloud Software	
LM-BASE	12 month subscription to the Base Lighting Management Package
SW-ENERGY-BASE	12 month subscription. kWh dashboards & threshold emails
SW-ENERGY-PT	Pilot energy management dashboards. 6 month pilot. 5 endpoints