

OVERVIEW

SimplySnap delivers a unified wireless platform for operational visibility, energy management, and facility-wide automation. By connecting lighting, HVAC systems, production equipment, and metering into a single system, SimplySnap helps facilities reduce energy costs, improve operational awareness, and simplify management across one site or an entire portfolio.

SYSTEM FEATURES

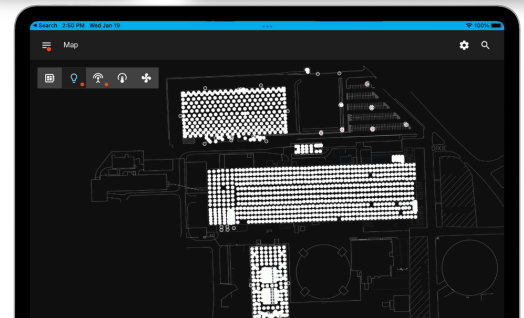
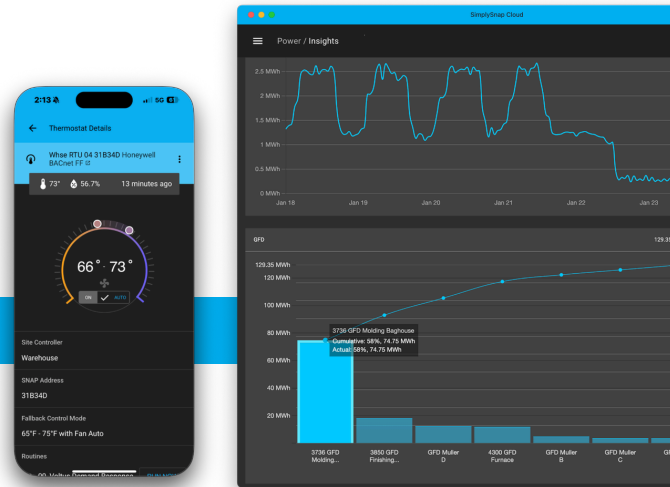
Wirelessly Control, Track and Monitor

Control: Control and automate lighting, HVAC, and equipment across all sites using scheduling, occupancy, daylight harvesting, and scene-based strategies to reduce energy use.

Monitor: Monitor production equipment, HVAC systems, and other critical assets in real time to identify abnormal runtime, inefficiencies, and other operational issues before they impact your facility.

Track: Gain centralized visibility into lighting, equipment, energy, and resource usage across the entire facility through a single wireless platform.

Report: Standardize reporting and operational insights across all facilities with centralized dashboards, benchmarking, and alerts.



SMALL SITES
Few Hundred Lights

MULTI SITE
Thousands of Locations

LARGE SITES
Up to 10,000 Lights

Industrial Lighting Control

Lighting controls that create the foundation for HVAC integration, EMS, and resource monitoring applications.



Reliable in Demanding Industrial Environments. Long-range self-healing mesh networking designed to perform in manufacturing plants.

Lighting Control for Energy Savings. Reduce energy usage through occupancy sensing, daylight harvesting, scheduling, high-end trim, and scene control.

Flexible Software-Defined Zoning. Group and reconfigure fixtures by aisle, production line, department or task zone without rewiring.

Real-Time Operational Visibility. Monitor fixture status, power usage, runtime hours, and alarms from a centralized interface.

Scalable Across Single or Multi-Site Facilities. Manage one facility or an entire enterprise through centralized, local, or cloud-based tools.

Built for Retrofit and New Construction. Supports a wide range of fixtures and control methods, including 0-10V and DALI/D4i.

Monitor Energy Across Your Facility

Integrates seamlessly with existing facility infrastructure using standard wireless interface devices, avoiding costly modernization.

SUBMETERING



Connects to sub-panels for granular energy consumption tracking within specific areas.

EQUIPMENT MONITORING



Directly interfaces with individual equipment power sources to monitor energy usage and operational status.

MAINS MONITORING



Installs at main power entry points to capture overall facility consumption and identify load patterns.

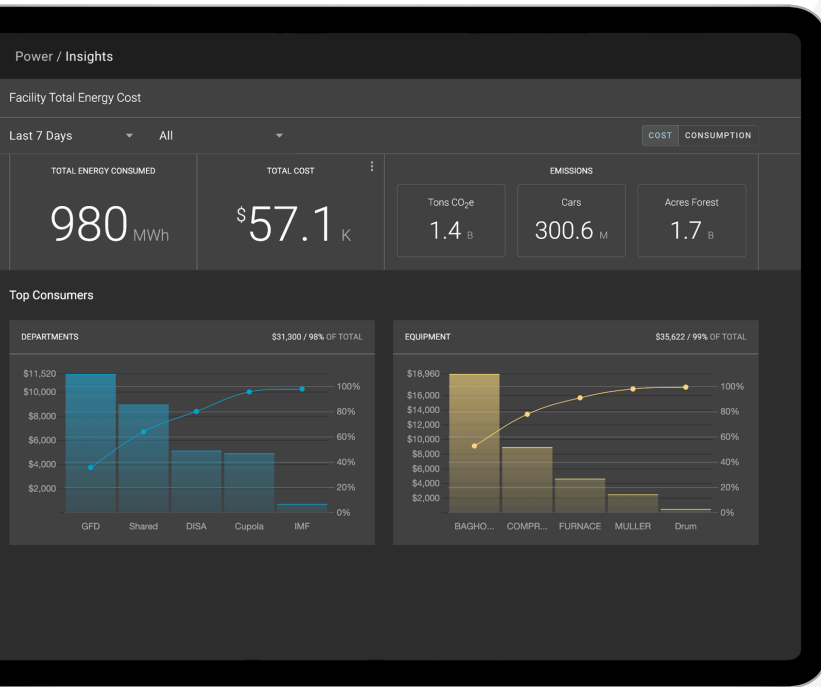
Challenges Solved by SimplySnap

BRING DISCONNECTED SYSTEMS INTO ONE PLATFORM

Lighting, HVAC, metering, water, gas, and operational systems are often managed through separate platforms with little centralized visibility or coordinated control.

How SimplySnap Solves It

- Unify lighting, HVAC, metering, water, gas, and operational systems on a single platform.
- Centralize monitoring, alerts, reporting, and automation across the facility.
- Automate significant energy users, like lighting and HVAC, based on schedules or occupancy.
- Simplify facility management with a scalable wireless infrastructure.



Best-in-Class Wireless Connectivity: Proven performance in 1M+ sq. ft. facilities and large outdoor. Reliable mesh extends across indoor & outdoor.

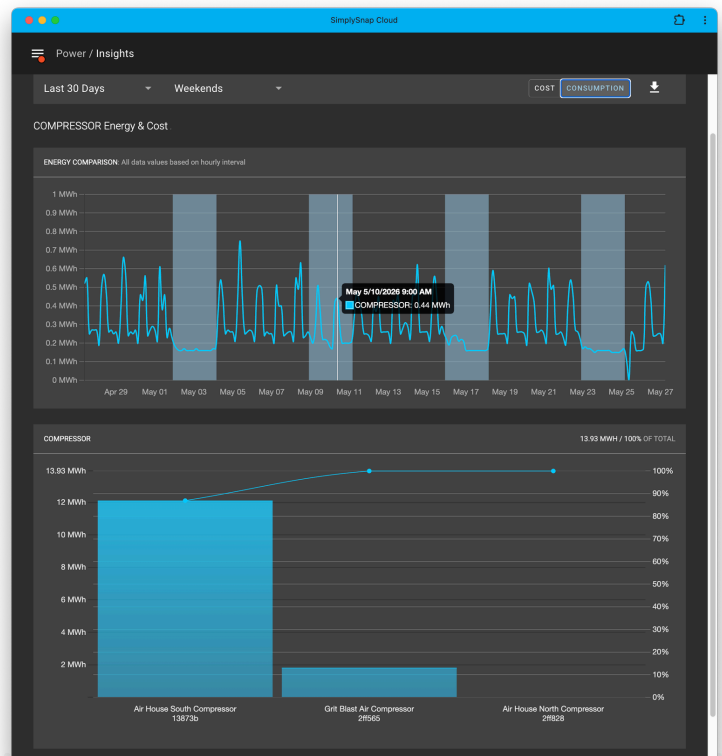
Standards-Based and Future-Proof: Installation-friendly options integrate with legacy or modern fixtures and controllers.

IDENTIFY HIDDEN ENERGY WASTE

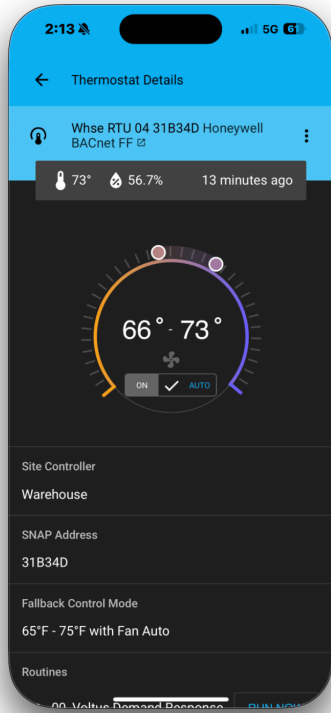
Facilities often don't know how energy is used across departments, production lines, and equipment, making it hard to prioritize efficiency improvements.

How SimplySnap Solves It

- Monitor energy usage across departments, production lines, and equipment groups.
- Identify excessive runtime, off-hours operation, and inefficient processes.
- Prioritize operational investigations using real-time dashboards and reporting.
- Support continuous improvement initiatives with measurable operational data.



Challenges Solved by SimplySnap



HVAC OPERATIONAL VISIBILITY

Many industrial facilities have HVAC systems spread across multiple buildings, vendors, and operational areas. SimplySnap centralizes HVAC control and monitoring to improve efficiency, reduce energy waste, and simplify facility management.

How SimplySnap Solves It

- Manage thermostats, setpoints, and fan modes from a single interface.
- Schedule temperature settings around production schedules and facility occupancy.
- Track HVAC status, runtime, and energy consumption to identify inefficiencies.
- Standardize HVAC control strategies across buildings and facilities.

Seamless Integration with Other Systems: Integrates with BMS platforms via BACnet or Modbus and offers an optional REST API for custom integrations with lighting, HVAC, and other facility systems.

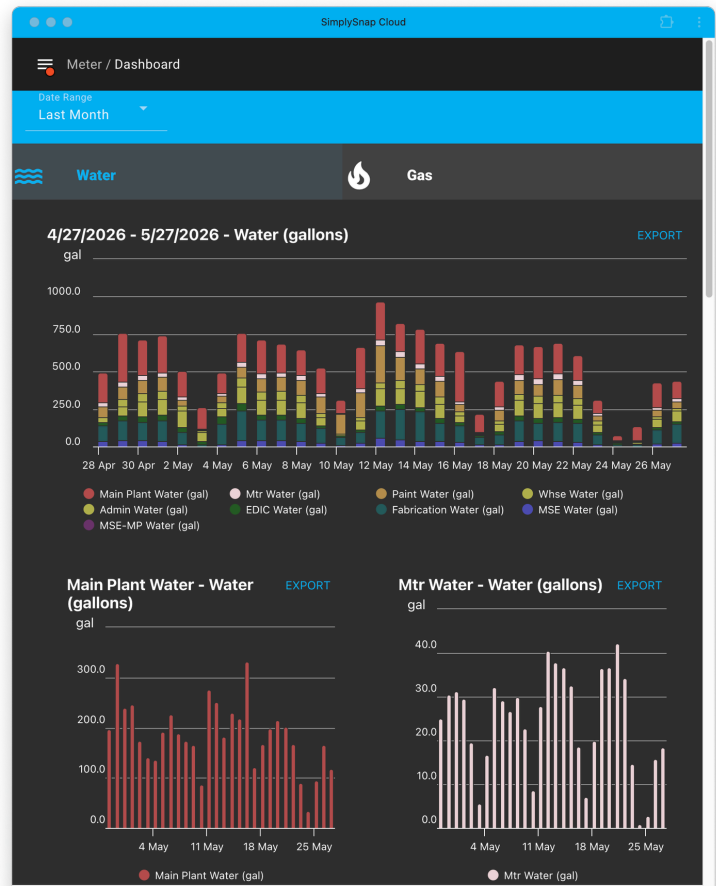
Centralized Management: Scalability to manage lighting and other systems across large multi-site portfolios.

RESOURCE MONITORING

Water and gas usage often go unmonitored until utility bills arrive or a leak becomes a costly problem. SimplySnap helps facilities gain real-time visibility into resource consumption by collecting meter data over the same wireless infrastructure used for lighting, HVAC, and energy management.

How SimplySnap Solves It

- Collect consumption data from utility meters and view it through centralized dashboards.
- Use the same wireless mesh network already deployed for lighting and facility monitoring.
- Receive proactive alerts when abnormal consumption patterns may indicate leaks or equipment issues.
- Trend usage over time to identify waste, verify conservation efforts, and support operational decision-making.



Proven Enterprise-Wide Facility Results

Recent examples where our solution was an excellent fit.

- ✓ **Lighting Energy:** Over 50% reduction in annual energy consumption (kWh) through occupancy and scheduling. Early detection of issues enabled timely maintenance, enhancing safety and manufacturing time.
- ✓ **HVAC Energy:** By managing the building's HVAC system as a whole rather than relying on individual thermostats, the facility achieved an over-25 % reduction in energy consumption (kWh).
- ✓ **Behavioral Change:** The team scheduled shutdown of portions of the air compressor system during non-production hours on nights and weekends. Rather than running the entire system during periods of reduced operations, the team shifted the weekend load to a smaller, less expensive air compressor

RESULTS:

- Saved \$84,000 annually in direct energy costs.
- The payback period was less than 5 months.
- Project supported corporate energy efficiency initiatives.

SimplySnap

Facility-Wide & Enterprise-Wide Control

SimplySnap extends beyond lighting, offering a comprehensive suite of solutions with a primary focus on **Industrial Energy Management**.

- **Lighting Management** - Intelligently control and automate lighting across every site - using occupancy, daylight scheduling, and scene-based control.
- **Energy Management** - Monitor and optimize energy consumption across sites, equipment, and systems - in both kWh and dollars.
- **Water Efficiency** - Detect leaks and abnormal usage early - reducing waste, damage, and utility costs.
- **HVAC Integration** - Integrate with HVAC systems to support demand response, load control, and energy optimization.
- **Data Driven Insights** - Turn real-time data into actionable insights across energy, performance, and operations.



We Work With Most OEM Fixture Manufacturers

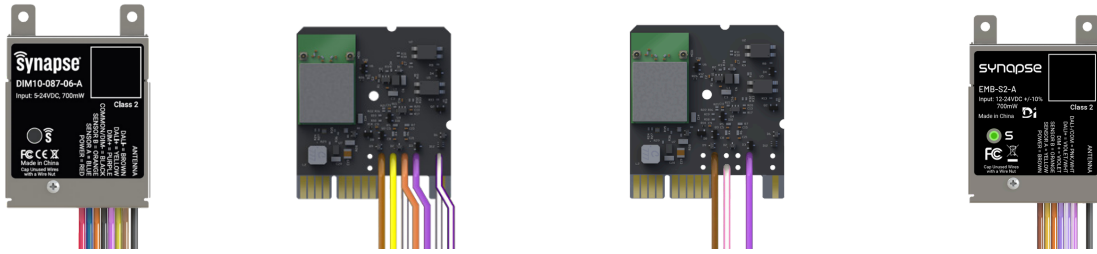
SimplySnap Energy Management Components

This cloud-based management solution brings everything into a single platform, enabling manufacturers to manage data across their entire operation, with flexible options for smart lighting, HVAC, and compressed air.

In Fixture Controllers

DIM10-087-06-A, DIM10-087-06-FW, DIM10-087-06-F3W, EMB-S2-A

DC powered controllers installed at the factory by the OEM.



External (Bolt-On) Controllers

DIM10-220, TL7-HV(G), TL7-DALI-DC, SNV-CS-10, ZHA-S1, CSEN1-H-W/G, DIM10-087-06-IP

External bolt-on controllers that make it easy to add SimplySnap to virtually any light.



Wireless Sensor Interface

Sense 420



Wireless Sensor Interface

Bridge 485



Industrial Controller

Control Contact



[SynapseWireless.com](https://www.synapsewireless.com)

SYNAPSE