

Specification Data	
Job Name	
Type	
Catalog #	
Comments	

## PRODUCT OVERVIEW

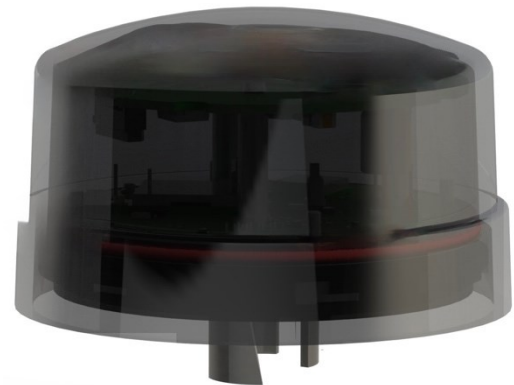
The **TL7-DALI-DC** and **TL7-DALI-DC-NG** are intelligent D4i wireless lighting controllers designed for Street and Area Lighting applications. The TL7-DALI-DC(NG) provides DLC LLLC compliance by offering persistence with an installed occupancy sensor, on board ambient light sensor, and high-end trim. Each TL7-DALI-DC(NG) provides intelligent ON/OFF switching, dimming, sensor input, photocell, highly accurate D4i power metering, D4i Asset Data, D4i diagnostics and status monitoring of the luminaire. The TL7-DALI-DC provides additional GPS and optional Tilt.

## KEY FEATURES:

- Compatible with ANSI C136.41 7-pin Receptacle
- Self-Healing Mesh Network
- Secure, Over-the-Air Upgrades
- Secure AES128 Encryption
- One Sensor Input
- GPS (TL7-DALI-DC only)
- Tilt (Optional – TL7-DALI-DC only)
- Status LED's are Software-Dimmable
- Power-on Dimming Test Eases Installation
- DLC Certification for Indoor and Outdoor
- Dusk to Dawn persistence via photocell when the Gateway is offline
- LINE (Black) and LOAD (Red) are internally shorted together to pass power through to LED driver

### IEC 62386 DALI-2 CERTIFIED – D4i

- D4i Power Monitoring – Part 252
- D4i Diagnostic Data – Part 253
- D4i – Type D – Single-Master Control – Part 351
- DALI-2 Linear Dimming, ON/OFF – Part 218
- Compatible with DALI-2 Motion Sensors: FDP-301 and Lumawise 3-2444029-1 – D4i
- Requires an active DALI Power Supply and Aux Power



Product #	Description
TL7-DALI-DC	Low Voltage D4i Twist-lock with GPS and Tilt
TL7-DALI-DC-NG	Low Voltage D4i Twist-lock without GPS, without Tilt

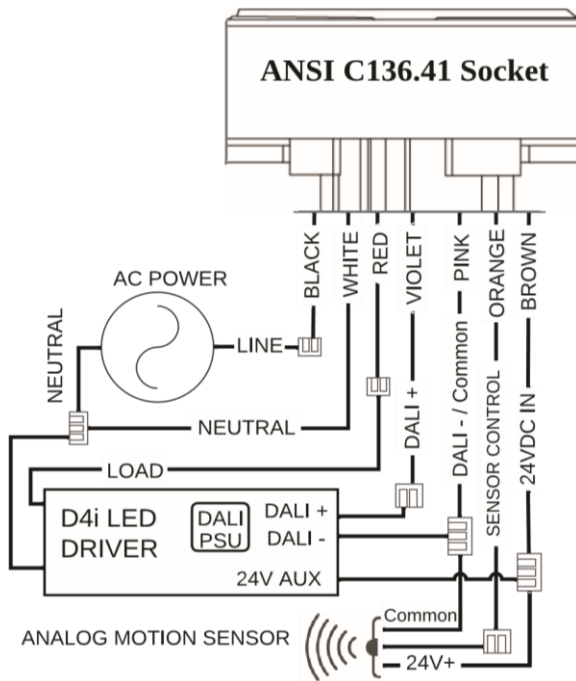
## SPECIFICATIONS:

Dimensions	3.3" D x 2" H (84 mm D x 51 mm H)
Input Voltage	24 VDC
Operating Environment	-40°C to +70°C; 0% to 90% RH non-condensing
Enclosure Rating	IP66
Photocell	Dusk (10fc) Dawn (40fc)
Radio	SNAP 2.4GHz; 802.15.4 +20 dBm Transmit Power -103 dBm Receive Sensitivity
Sensor Input	0-24V Motion Sensor
Power Monitoring	2% accuracy D4i LED Driver Specifications
Power Readings	Voltage, Watts
Certifications	FCC, IC, cULus, DLC, RoHS, D4i
RF Range	500 Feet/152 Meters
Warranty	5 Years <a href="#">Warranty Terms</a>

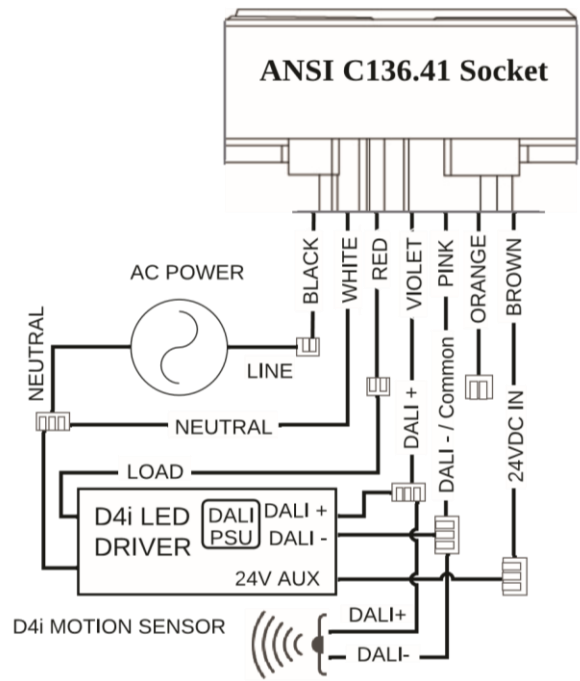


# TL7-DALI-DC(NG) WIRING DIAGRAMS

## ANALOG MOTION SENSOR

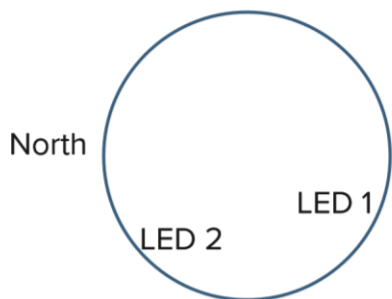


## DALI-2 MOTION SENSORS



FUNCTION	WIRE
LINE	BLACK
NEUTRAL	WHITE
LOAD	RED
DALI +	VIOLET
DALI - / COMMON	PINK
CONTROL	ORANGE
+24VDC AUX	BROWN

## STATUS LEDs



LED	COLOR	STATUS
LED 1	Blue	Network Found, No Configuration
LED 1	Green	Normal Operation
LED 1	Red	Communication Error
LED 2	Blue	Power On