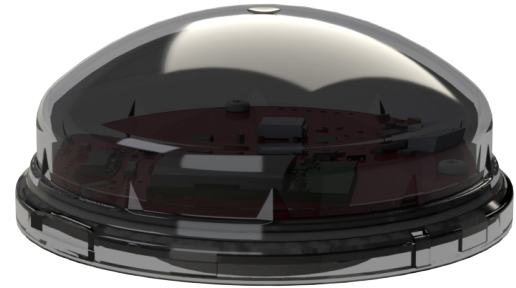


Specification Data	
Job Name	
Type	
Catalog #	
Comments	



Powered by SimplySnap

PRODUCT OVERVIEW

The ZHA-S1 is a DALI-based, intelligent wireless lighting controller that opens an exciting integration path for LED Luminaires. The small size and low cost make this DC-powered wireless controller versatile enough to be connected to nearly any wattage LED Luminaire. Pairing the ZHA-S1 with a SimplySNAP Site Controller makes it easy to comply with DALI-2, ASHRAE, Title 24, DLC NLC Indoor/Outdoor, and other energy requirements today and in the future.

KEY FEATURES:

- Seamless SimplySnap Integration
- Small footprint allows for easier integration
- Simplified DC Design — mates with LED Drivers
- Zhaga Book 18 receptacle support
- Secure AES128 Encryption
- Self-healing 2.4GHz SNAP Mesh Networking
- Secure, over-the-air software upgrades
- 1 Sensor Input: DC Motion or 0-10V Photocells
- IEC 62386 DALI-2 Certified – D4i
- DALI-2 Certified DATA Bus – Part 101
- DALI-2 /D4i Power Monitoring – Part 252
- D4i – Type D – Single-Master Controller – Part 351
- DALI-2 Linear Dimming, ON/OFF – Part 218
- DLC Certification for both Indoor and Outdoor
- Powered via LED Driver Aux Power

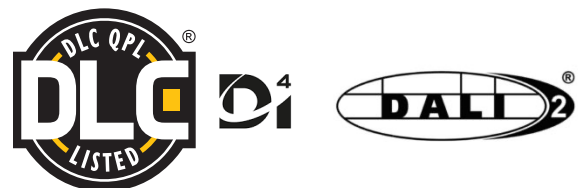
Product #	Description
ZHA-S1	Digital Zhaga Controller

SPECIFICATIONS

Dimensions	3.15" D x 1.5" H (80 mm D x 38 mm H)
Input Voltage (CV)¹	12-24 VDC
Max Current Draw	42mA @ 24V
Operating Environment	-40°C to +70°C; 0 to 95% RH non-condensing
Enclosure Rating	IP66 Rated; IK09
DALI-2	Limited to 4 LED Drivers
Sensor Input	Analog: 0-10V; Digital: 0-24V; Software selectable
Radio	SNAP 2.4GHz; 802.15.4 +20dBm Transmit power -103dBm Receive Sensitivity
Certifications	UL8750, FCC/IC, CE, DLC, RoHS, DALI-2, D4i
Warranty²	5 Years

Footnotes:

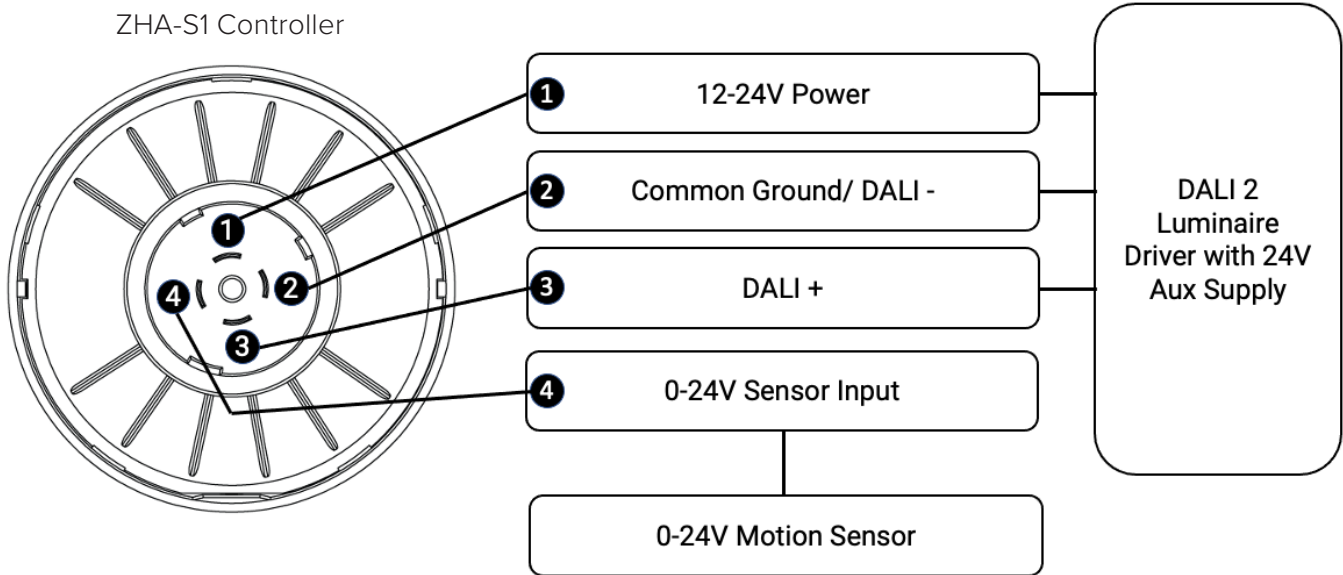
1. Constant Voltage
2. See www.synapsewireless.com/warranty for warranty term



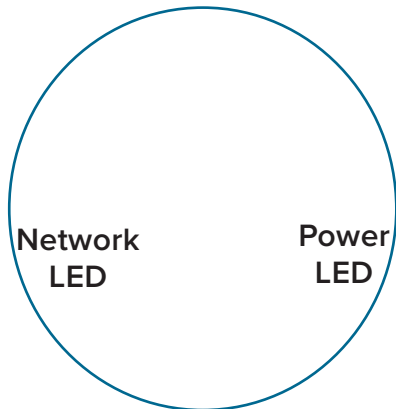
To learn more, call or visit:
synapsewireless.com
 (877) 982-7888

ZHA-S1 WIRING DIAGRAMS

Bottom View of the ZHA-S1 Controller



STATUS LED LIGHTS



Top View of ZHA-S1

LED	Color	Status
Network	Blue	Network Found, No Configuration
Network	Green	Normal Operation
Network	Red	Communication Error
Power	Blue	Unit Powered
Power	Off	Unit not Powered